

Nexcope®

NE300

COMPACT TEACHING EXPERIMENT BIOLOGICAL MICROSCOPE



Nexcope®

COMPACT AND DURABLE / ACCURATE AND RELIABLE / SIMPLE AND INTUITIV



## COMPACT AND DURABLE

Especially suitable for microscopic digital interactive classroom

### Integrated digital head

Optional integrated digital head, same size as normal binocular head, the microscope can be connected to network and build a digital interactive classroom, Micro-morphology interactive teaching by using NOW. Lab system could help to save teaching time. There is no protruding camera interface, so microscope is more concise and the daily maintenance is more convenient.



NE300 built-in digital head

### Carrying handle and hub device

Equipped with a special carrying handle and lightweight, stable, and stable in structure. The back of microscope is designed with a hub device to accommodate long power cords effectively, reducing the power cord trip accident during the process of transport. Small size could minimize storage space.



Old version trinocular head with microscope camera

Old version built-in digital head



## NE300 Compact teaching experiment biological microscope

In classroom teaching or daily work in laboratory, you need a microscope like NE300, not only compact, durable, but also accurate and reliable. After all, both micro-teaching classroom and inspection scientific research require users to work long time in space-limited operation table. Not only so, this optical microscope is also simple to operate and easy to use, considering the using experience of beginners. With it, students' learning will be more effective, and the work of the laboratory staff will be also with high proficiency.



# ACCURATE AND RELIABLE

Using for experiments, testing, and scientific research

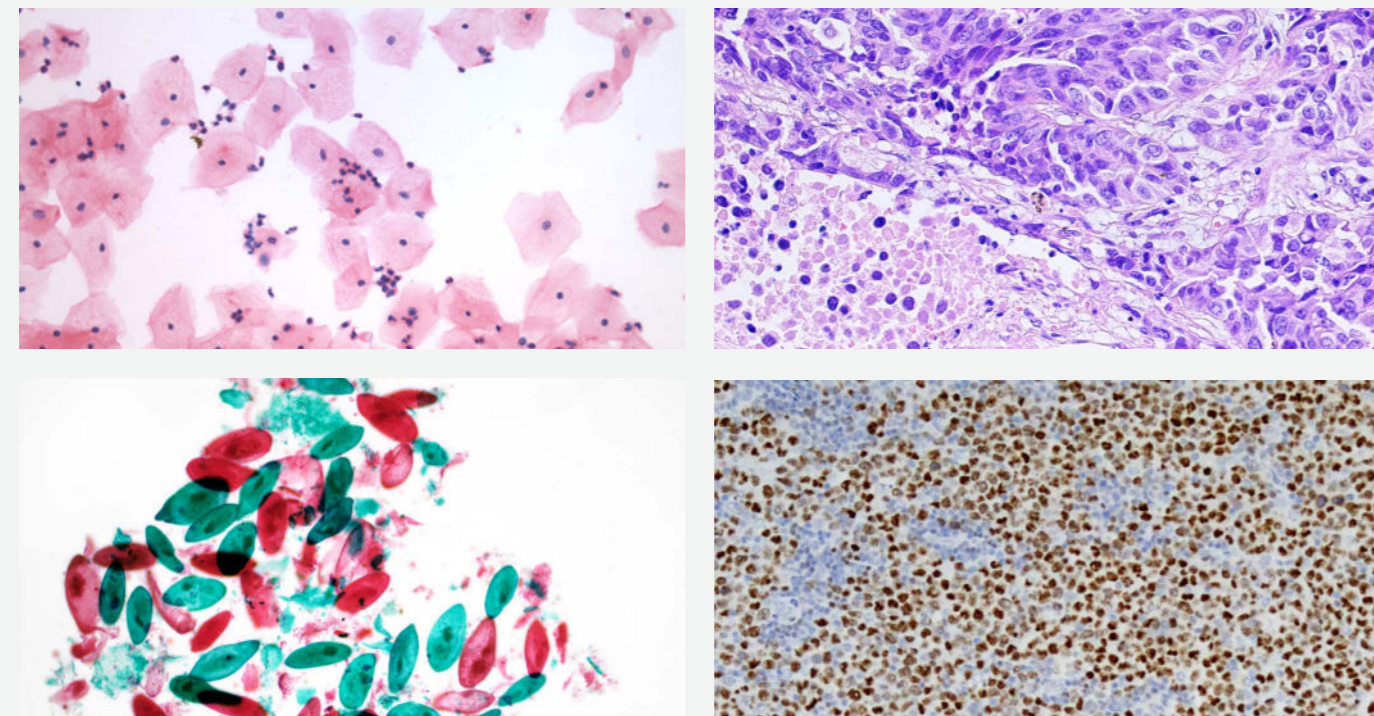
## NIS series plan achromatic objective

NIS series plan achromatic objective provide excellent chromatic aberration correction capabilities and flatness of field of view. High numerical aperture and long working distance, High imaging definition and wide- range application. Restore the true color and realize accurate observation for samples.



## 20mm wide field of view

Equipped with 20mm F.O.V tube and eyepiece, which could browse samples faster and improve work efficiency compared with old model 18mm F.O.V.



# SIMPLE AND INTUITIV

Optimize human-computer interaction, strengthen friendliness for beginners

## Comfortable and safe focus knob

Low position focus knob design, different areas on the specimen slide can be easily explored while resting your hands on the table, with adjustable torque could improve comfort. NE300 is equipped with a stopper that can be used to set the upper limit of the stage height, the stage stops at the set height even when the focus knob is turned, thereby eliminating the risk of over-focusing and breaking the slides or damaging the objectives.



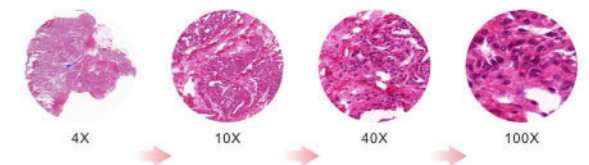
## Smart design

Beginners might be hurry-scurry to perform magnification switching, brightness adjustment, color temperature adjustment during microscope observation, NE300 simplifies these repetitive mechanical operations and display status on the LCD to improve work efficiency and provide comfortable user experience.



## Maintains comfortable brightness when switching magnifications

NE300 features intelligent Light Intensity Management which automatically remembers and sets the light intensity level for each objective, with this function, users can increase comfort and save time when the routine requires frequent magnification changes.



# SYSTEM OVERVIEW



## 1 NE300 microscope

Field of View 20mm;  
Quadruple nosepiece;  
Microscope status display;

## 2 Eyepiece

10X/20 plan eyepiece, with wider range of observation

## 3 Viewing head

Seidentopf binocular head  
Seidentopf trinocular head  
Integrated digital viewing head

## 4 Nosepiece

Quadruple nosepiece, provide smooth and seamless operation

## 5 Stage

Rectangular stage, there is no protruding on the left and right side of stage, so the operation could be more smooth and more suitable for beginners

## 6 Condenser

Inserted condenser NA1.25 with adjustable aperture, which could straightly set the best position of aperture diaphragm. Color-coded position guide markings of aperture diaphragm is corresponding to objective magnifications

## 7 Right-hand coarse and fine adjustment

Coaxial coarse and fine adjustment, equipped with focus knob torque adjustment ring, adjust the first wheel torque of coarse and fine adjustment, stress-free operation is suitable for long-time microscope operators.

## 9 Status display

LCD is located at the front of microscope, gently lower the head you can see the microscope status including magnification, brightness, color temperature, stand by status are shown on the Status display.

## 8 Left-hand coarse and fine adjustment

Equipped with stage vertical movement stopper, thereby eliminating the risk of over-focusing and breaking the slides or damaging the objectives.

## 10 Wire wrapping device

Its back board is designed with a hub device, which effectively accommodates excessive long power cords and improves cleanliness of the laboratory. At the same time, it also reduces trip accidents caused by excessive long power cords during transportation.

## NE300 Compact Teaching Experiment Biological Microscope Specifications

| Main body      | NE300 Binocular set  | NE300 Trinocular set       | NE300 Digital set               |
|----------------|--|----------------------------|---------------------------------|
| Optical system | NIS infinity optical system  |                            |                                 |
| Illumination   | High luminescent white 3W LED illuminator  |                            |                                 |
| Display        | (LCD display magnification, time sleeping, brightness indication and lock, etc.)   |                            |                                 |
| Eyepieces      | EW10X/20, With diopter adjustment  |                            |                                 |
| (F.O.V., mm)   | Seidentopf binocular tube  | Seidentopf trinocular tube | Integrated digital viewing tube |
| Tubes          | Reversed-type quadruple nosepiece (coding)   |                            |                                 |
| Nosepiece      | Rectangular mechanical stage 180mm X 130mm, with specimen holder, with vernier calibrations, moving range: 74 mm x 30 mm |                            |                                 |
| Stage          | Plan Achromat 4X<br>Plan Achromat 10X<br>Plan Achromat 40X<br>Plan Achromat 100X   |                            |                                 |
| Objectives     | Inserted condenser NA1.25  |                            |                                 |
| Condenser      | Brightfield  |                            |                                 |

## DIMENSION FIGURE

(Unit: mm)

